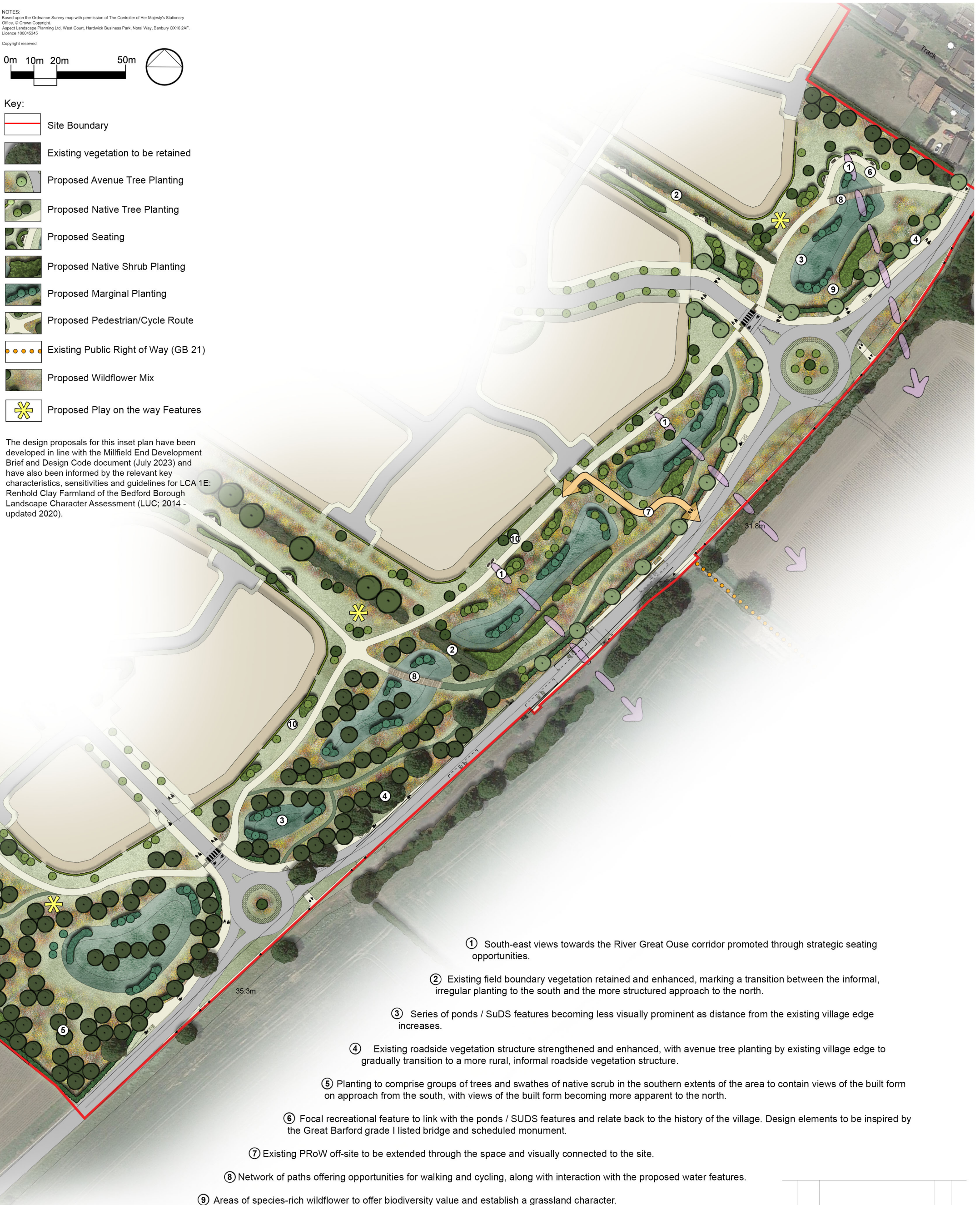




Key:

-  Site Boundary
-  Existing vegetation to be retained
-  Proposed Avenue Tree Planting
-  Proposed Native Tree Planting
-  Proposed Seating
-  Proposed Native Shrub Planting
-  Proposed Marginal Planting
-  Proposed Pedestrian/Cycle Route
-  Existing Public Right of Way (GB 21)
-  Proposed Wildflower Mix
-  Proposed Play on the way Features

The design proposals for this inset plan have been developed in line with the Millfield End Development Brief and Design Code document (July 2023) and have also been informed by the relevant key characteristics, sensitivities and guidelines for LCA 1E: Renhold Clay Farmland of the Bedford Borough Landscape Character Assessment (LUC; 2014 - updated 2020).



- ① South-east views towards the River Great Ouse corridor promoted through strategic seating opportunities.
- ② Existing field boundary vegetation retained and enhanced, marking a transition between the informal, irregular planting to the south and the more structured approach to the north.
- ③ Series of ponds / SuDS features becoming less visually prominent as distance from the existing village edge increases.
- ④ Existing roadside vegetation structure strengthened and enhanced, with avenue tree planting by existing village edge to gradually transition to a more rural, informal roadside vegetation structure.
- ⑤ Planting to comprise groups of trees and swathes of native scrub in the southern extents of the area to contain views of the built form on approach from the south, with views of the built form becoming more apparent to the north.
- ⑥ Focal recreational feature to link with the ponds / SuDS features and relate back to the history of the village. Design elements to be inspired by the Great Barford grade I listed bridge and scheduled monument.
- ⑦ Existing PRoW off-site to be extended through the space and visually connected to the site.
- ⑧ Network of paths offering opportunities for walking and cycling, along with interaction with the proposed water features.
- ⑨ Areas of species-rich wildflower to offer biodiversity value and establish a grassland character.
- ⑩ Amenity grassland with occasional native trees and native shrub planting to provide a high-quality setting to the development edge.

REV	DATE	NOTE	DRAWN	CHK'D

aspect landscape planning

TITLE
 Land off Bedford Road, Great Barford
 Landscape Inset Plan

CLIENT
 Axion Developments

SCALE 1:1,500 @ A3	DATE JULY 2024	DRAWN AS	CHK'D IC
DRAWING NUMBER 7963 / ASP5 / IP		REVISION	

